

**St. Gerald Catholic Church Parish Survey**

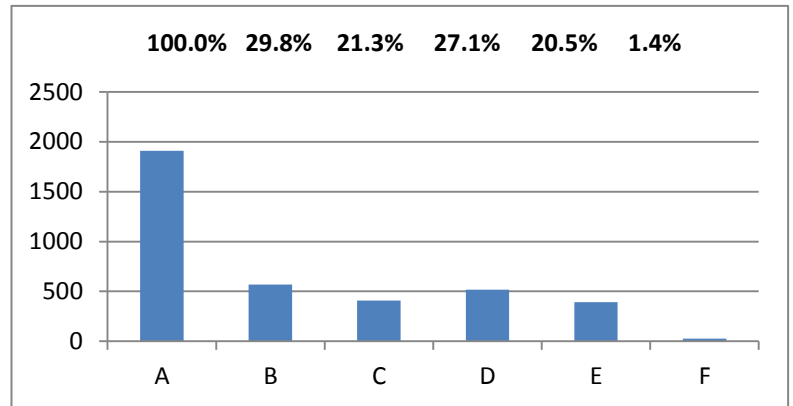
**Nov. 30, 2011**

**1. Your role at St. Gerald Parish**

<u>Responses</u>		<u># of Responses</u>	<u>%</u>
Total	A	1909	100.0%
Attend Mass	B	568	29.8%
Participate in ministries	C	407	21.3%
Financial support	D	517	27.1%
Share faith	E	391	20.5%
*Other	F	26	1.4%

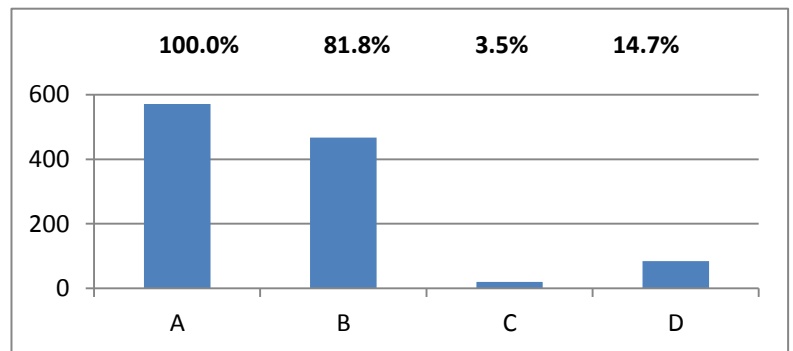
\*Other - see attached list

Note: respondents could check all that apply. Each selection counted as a separate response.



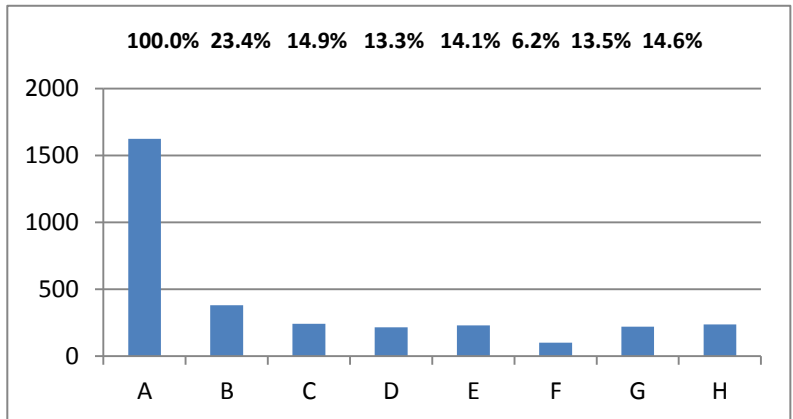
**2. Do you enjoy receiving parish newsletter, SpiritLink?**

<u>Responses</u>		<u># of Responses</u>	<u>%</u>
Total	A	571	100.0%
Yes	B	467	81.8%
No	C	20	3.5%
Do not read	D	84	14.7%



**3. Other information you would like to see in SpiritLink**

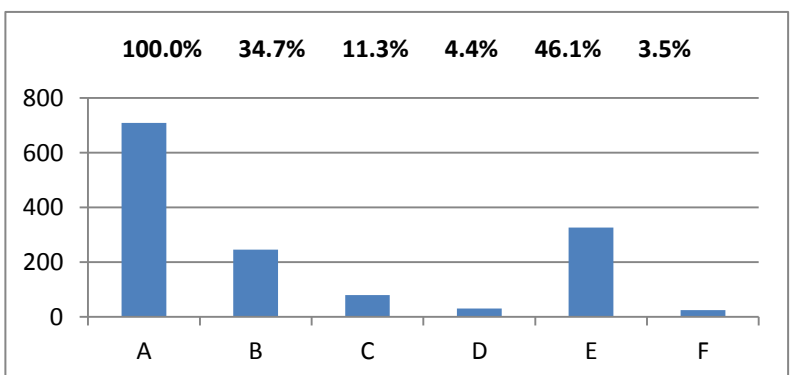
<u>Responses</u>		<u># of Responses</u>	<u>%</u>
Total	A	1625	100.0%
Parish groups/activities	B	380	23.4%
Pastor comments	C	242	14.9%
Parishioner highlights	D	216	13.3%
Parish finances	E	229	14.1%
Diocesan-wide news	F	101	6.2%
General Catholic interest	G	220	13.5%
Specific Catholic teachings	H	237	14.6%



**4. Prefer receiving parish information through**

<u>Responses</u>		<u># of Responses</u>	<u>%</u>
Total	A	709	100.0%
E-mail	B	246	34.7%
Internet	C	80	11.3%
Facebook	D	31	4.4%
Regular mail	E	327	46.1%
*Other	F	25	3.5%

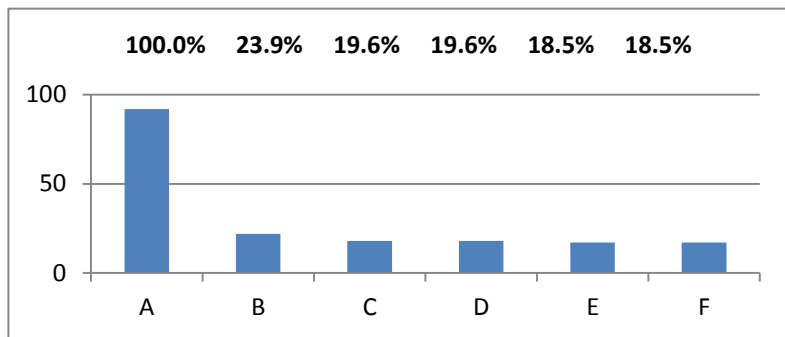
\*Other - see attached list



5. Suggestions to enhance our Sunday liturgies

Responses	# of Responses	%
Total	A 92	100.0%
Less singing, less chanting	B 22	23.9%
Greater variety of music	C 18	19.6%
Relate daily lives to readings	D 18	19.6%
Shorten mass	E 17	18.5%
Start liturgies on time	F 17	18.5%

See "Other" for additional responses

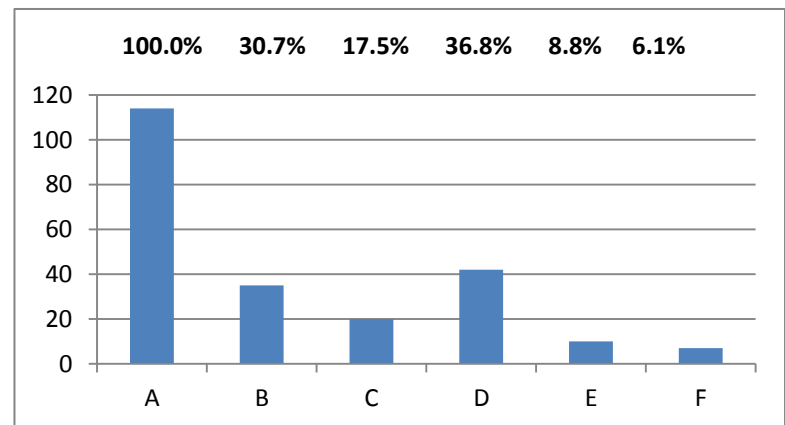


**Answer 6 - 7 only if you have children who attend the K-8 Religious Education program at St. Gerald**

6. Like about the K-8 Religious Education Program

Responses	# of Responses	%
Total	A 114	100.0%
Catechists, teachers, staff	B 35	30.7%
Fellowship	C 20	17.5%
Learning about faith	D 42	36.8%
Meeting times	E 10	8.8%
*Other	F 7	6.1%

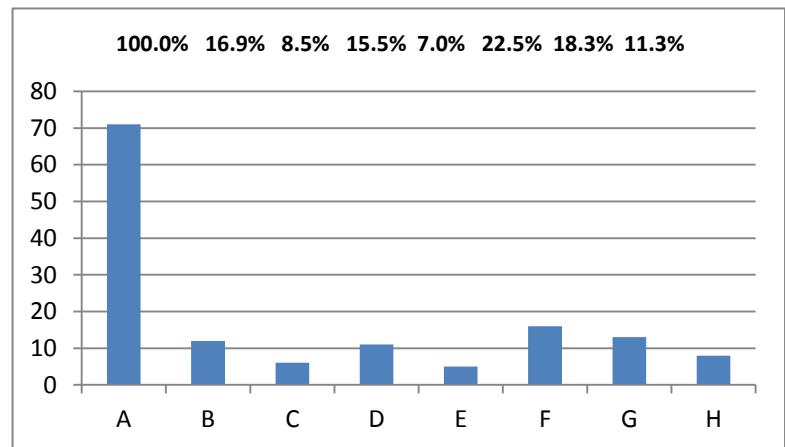
\*Other - see attached list



7. How to improve K-8 Religious Education Program

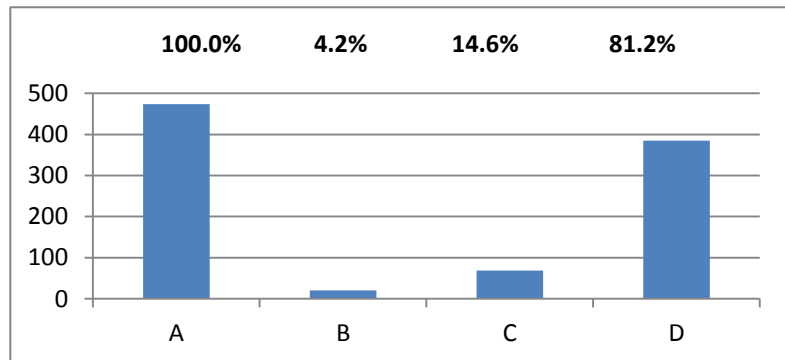
Responses	# of Responses	%
Total	A 71	100.0%
Parents more involved	B 12	16.9%
Change time	C 6	8.5%
Training for teachers	D 11	15.5%
Improve curriculum	E 5	7.0%
Involve children in liturgy	F 16	22.5%
Parents learning opportunity	G 13	18.3%
*Other	H 8	11.3%

\*Other - see attached list



8. Do your high school children regularly attend Youth Ministry activities at St. Gerald Church?

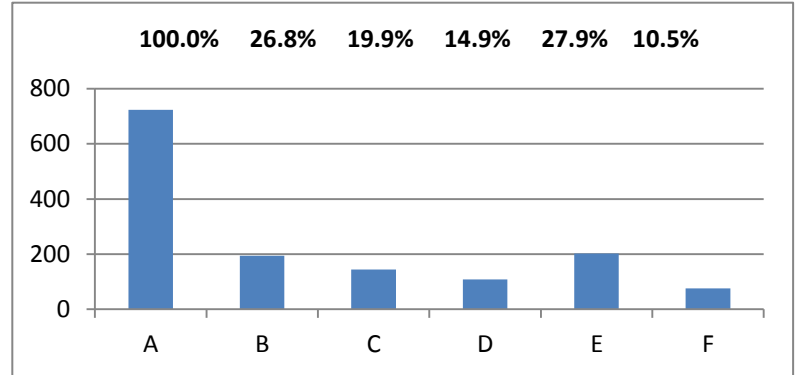
Responses	# of Responses	%
Total	A 474	100.0%
Yes	B 20	4.2%
No	C 69	14.6%
Not applicable	D 385	81.2%



9. How would you suggest we reach out to "unchurched" school-aged children within our parish who are not involved with youth ministry programs?

Responses		# of Responses	%
Total	A	724	100.0%
Faith based social events	B	194	26.8%
Service opportunities	C	144	19.9%
Publication of events	D	108	14.9%
Personal invitation	E	202	27.9%
*Other	F	76	10.5%

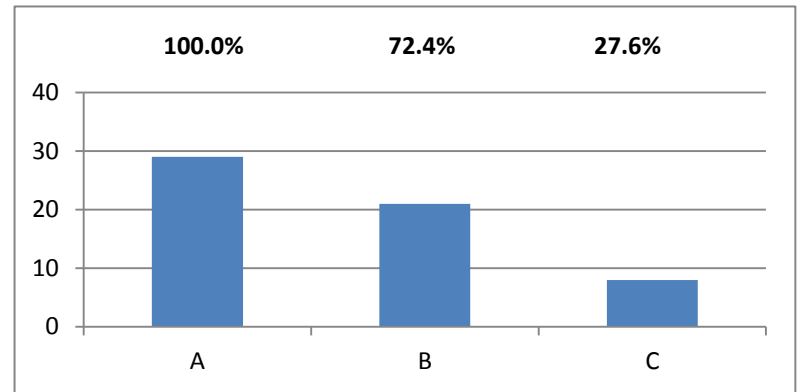
\*Other - see attached list



**Answer 10 - 12 only if have high school children currently active in St. Gerald Youth Ministry program**

10. Does St. Gerald youth ministry program serve the needs of the youth of our parish?

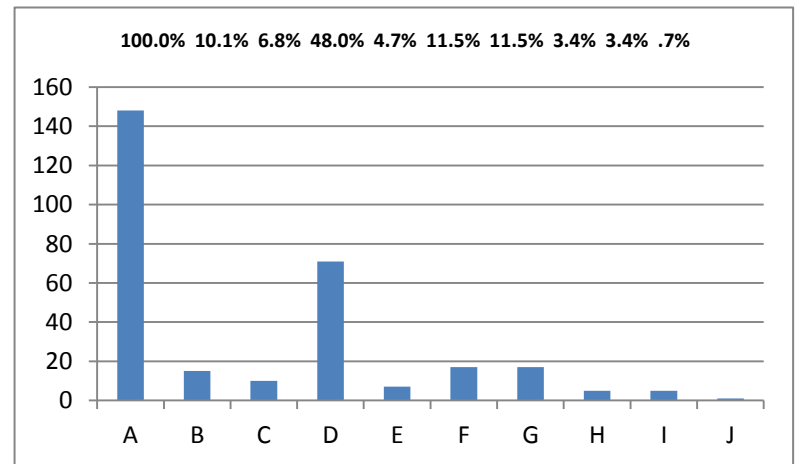
Responses		# of Responses	%
Total	A	29	100.0%
Yes	B	21	72.4%
No	C	8	27.6%



11. What are strengths of St. Gerald youth ministry program

Responses		# of Responses	%
Total	A	148	100.0%
Staff involvement/leadership	B	15	10.1%
Organization	C	10	6.8%
Diversity of programs	D	71	48.0%
Coordinate w/service require	E	7	4.7%
Youth involvement	F	17	11.5%
Mass involvement	G	17	11.5%
Publication of programs	H	5	3.4%
Number/frequency of programs	I	5	3.4%
*Other	J	1	0.7%

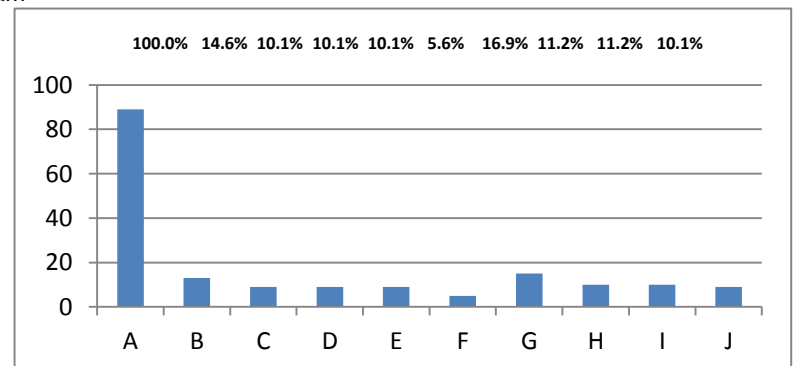
\*Other - see attached list



12. Area(s) of improvement in St. Gerald's youth ministry program

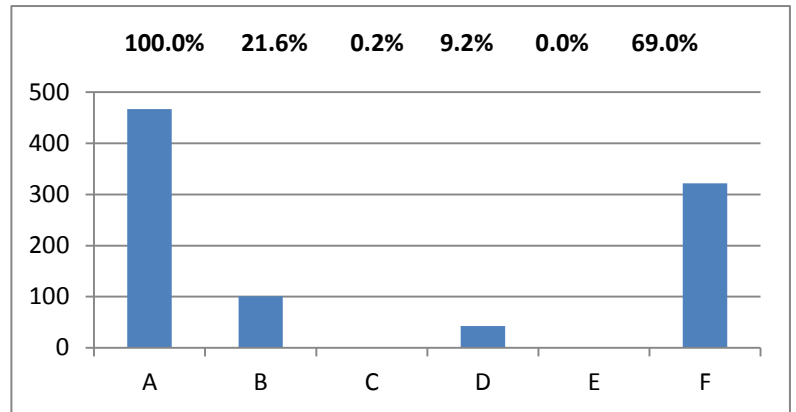
Responses		# of Responses	%
Total	A	89	100.0%
Staff involvement/leadership	B	13	14.6%
Organization	C	9	10.1%
Mass involvement	D	9	10.1%
Coordinate w/service require	E	9	10.1%
Diversity of programs	F	5	5.6%
Youth involvement	G	15	16.9%
Publication of programs	H	10	11.2%
Number/frequency of programs	I	10	11.2%
*Other	J	9	10.1%

\*Other - see attached list



13. Where do your K-8 dependents attend school?

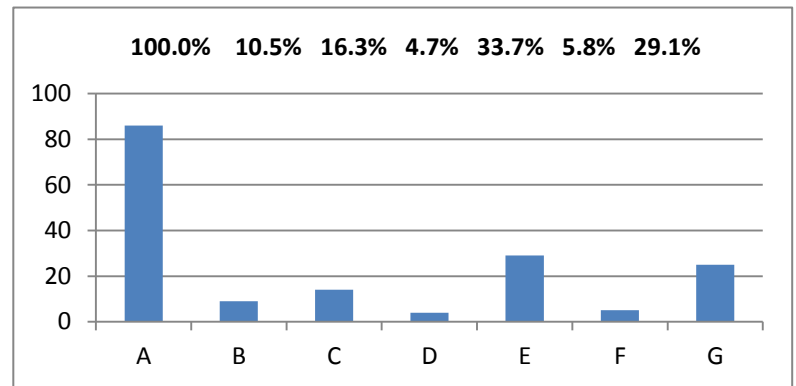
<u>Responses</u>		# of	<u>Responses</u>	%
Total	A	467		100.0%
St. Gerald Catholic School	B	101		21.6%
Other private school	C	1		0.2%
Public School	D	43		9.2%
Home school	E			0.0%
Not applicable	F	322		69.0%



14. Reason your K-8 dependent does not attend St. Gerald school

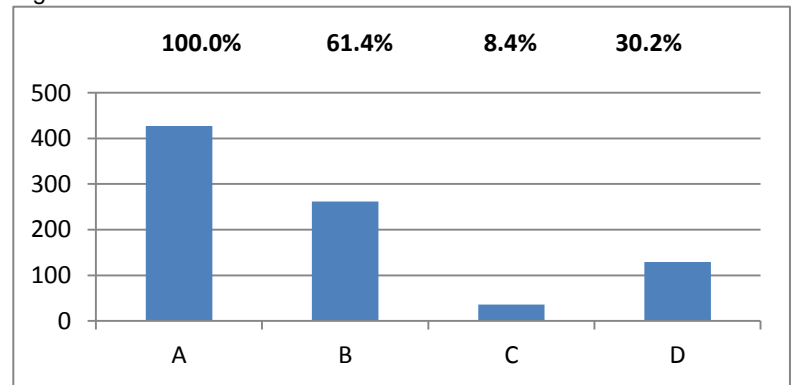
<u>Responses</u>		# of	<u>Responses</u>	%
Total	A	86		100.0%
Transportation is a problem	B	9		10.5%
Academic options-other schools	C	14		16.3%
Catholic education not priority	D	4		4.7%
Cost	E	29		33.7%
Quality of education	F	5		5.8%
*Other	G	25		29.1%

\*Other - see attached list



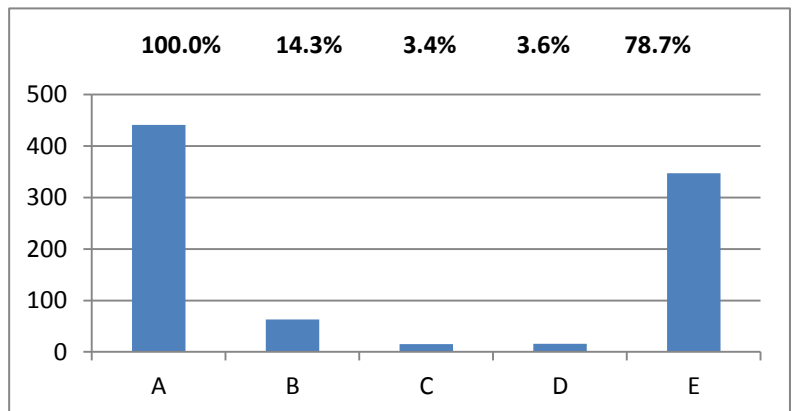
15. Your opinion of the addition of preschool to keep enrollment high

<u>Responses</u>		# of	<u>Responses</u>	%
Total	A	427		100.0%
Support	B	262		61.4%
Do not support	C	36		8.4%
Uncertain, need information	D	129		30.2%



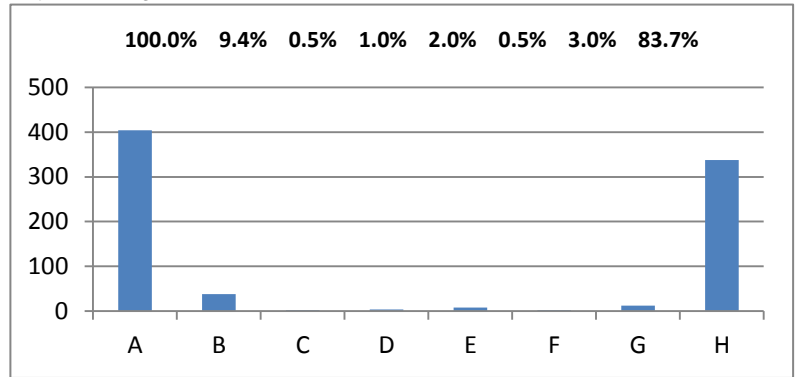
16. If you have/will have preschoolers, would you enroll them if St. Gerald Catholic School offered a preschool?

<u>Responses</u>		# of	<u>Responses</u>	%
Total	A	441		100.0%
Yes	B	63		14.3%
No	C	15		3.4%
Undecided	D	16		3.6%
Not applicable	E	347		78.7%



17. If dependents are not attending St. Gerald School, how are they receiving Catholic education?

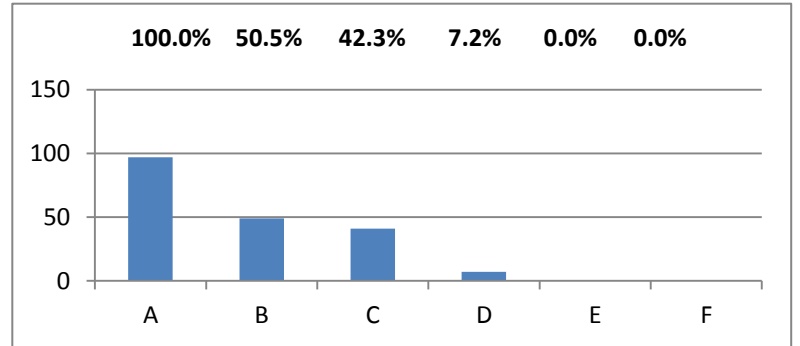
Responses	# of Responses	%
Total	A 404	100.0%
Religious ed provided by parish	B 38	9.4%
Youth group	C 2	0.5%
Summer program (VBS, Totus Tuus)	D 4	1.0%
Does not receive Catholic ed.	E 8	2.0%
Home school	F 2	0.5%
Other	G 12	3.0%
Not applicable	H 338	83.7%



**Answer 18 - 23 only if you have children attending St. Gerald School**

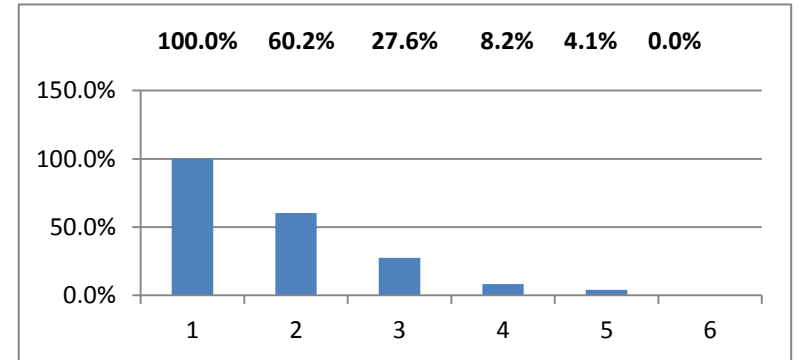
18. How would you rate quality of education

Responses	# of Responses	%
Total	A 97	100.0%
Excellent	B 49	50.5%
Good	C 41	42.3%
Adequate	D 7	7.2%
Fair	E 0	0.0%
Poor	F 0	0.0%



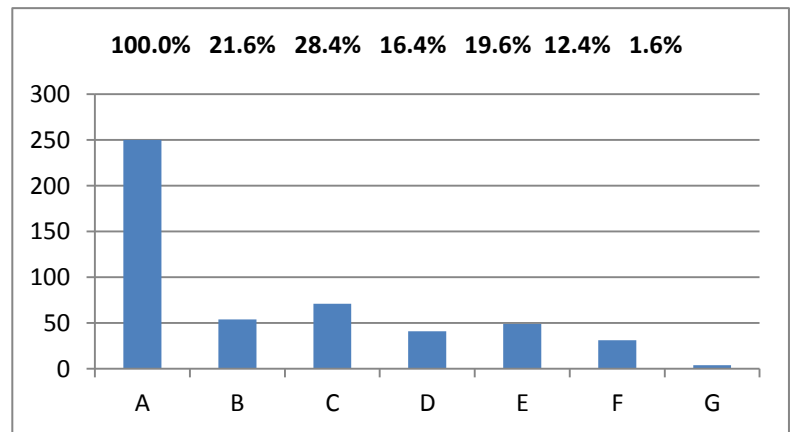
19. How receptive is administration and staff to meeting your needs?

Responses	# of Responses	%
Total	A 98	100.0%
Very receptive	B 59	60.2%
Somewhat receptive	C 27	27.6%
Neutral	D 8	8.2%
Unreceptive	E 4	4.1%
Very unreceptive	F 0	0.0%



20. What do you like most about our parish school?

Responses	# of Responses	%
Total	A 250	100.0%
Teachers, faculty and staff	B 54	21.6%
Catholic education	C 71	28.4%
Builds community	D 41	16.4%
Daily emphasis on Christian life	E 49	19.6%
Curriculum	F 31	12.4%
*Other	G 4	1.6%

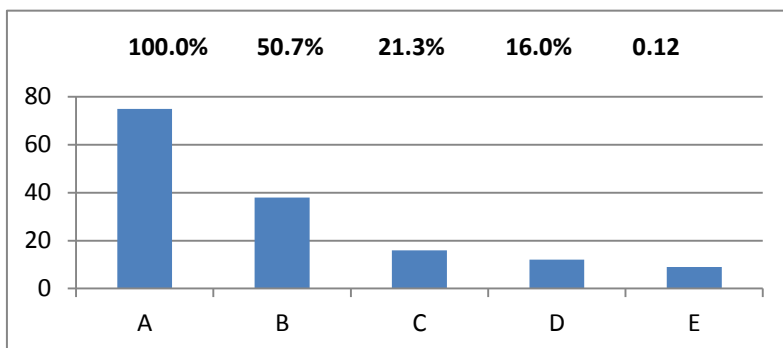


\*Other - see attached list

21. Why did you choose St. Gerald School for your children's education?

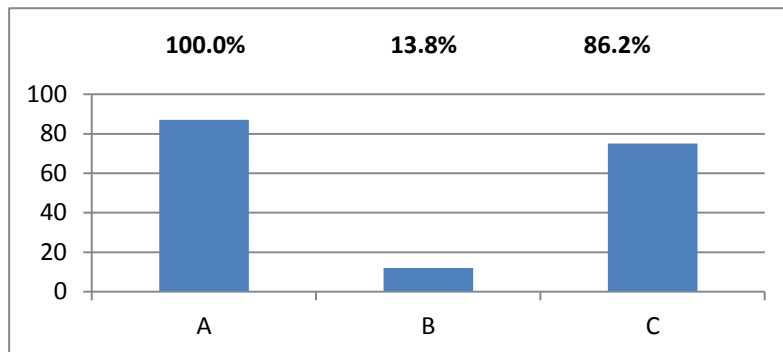
Responses		# of Responses	%
Total	A	75	100.0%
Catholic faith-based education	B	38	50.7%
Location & reputation	C	16	21.3%
Faith understanding daily basis	D	12	16.0%
Nothing could beat it / quality ed	E	9	0.12

See "Other" for additional responses



22. If St. Gerald offered a Before-School program including breakfast, would you enroll your child?

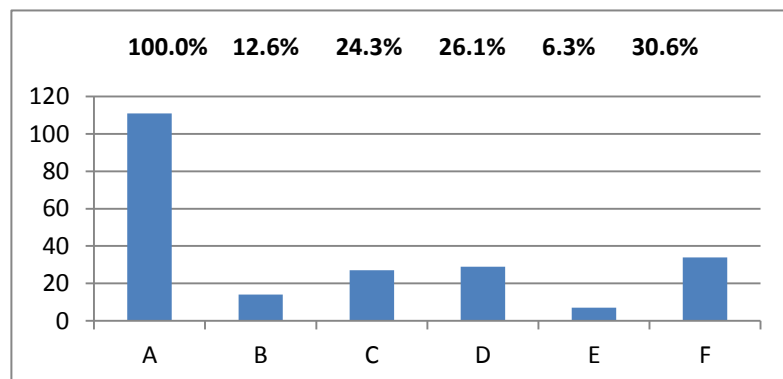
Responses		# of Responses	%
Total	A	87	100.0%
Yes	B	12	13.8%
No	C	75	86.2%



23. How can we improve our school?

Responses		# of Responses	%
Total	A	111	100.0%
Increase communication w/parents	B	14	12.6%
Improve the curriculum	C	27	24.3%
More training for teachers	D	29	26.1%
More emphasis on Catholic faith	E	7	6.3%
*Other	F	34	30.6%

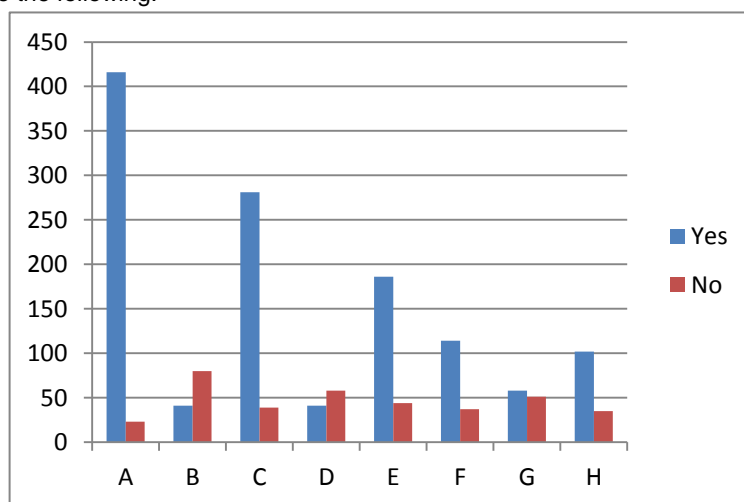
\*Other - see attached list



24. Does St. Gerald Catholic Church do a good job reaching out to the following:

Group:		Yes	No
Active parishioners	A	416	23
Inactive parishioners	B	41	80
New parishioners	C	281	39
Non-Catholic Spouses	D	41	58
The local community	E	186	44
Other Christian churches	F	114	37
Other religions	G	58	51
Minorities	H	102	35

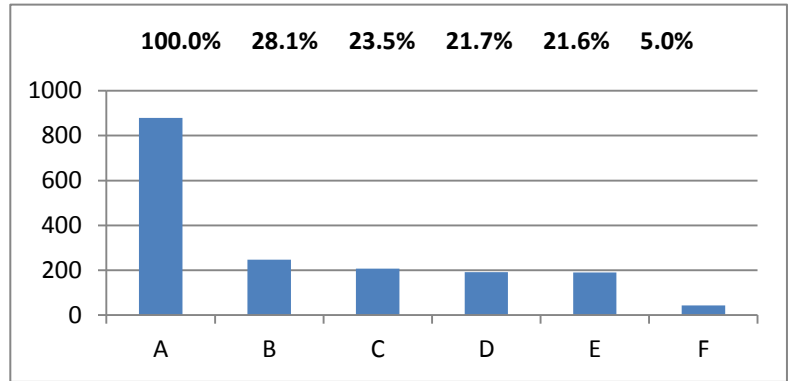
Majority of responses were "Unsure" - these were not tabulated,



25. What more can we do as a parish to reach out to those in need?

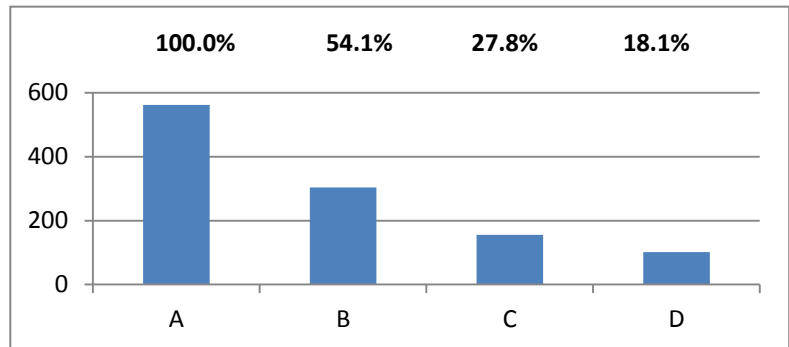
Responses	# of Responses	%
Total	A 879	100.0%
Communicate parish ministries	B 247	28.1%
Encourage parishioner participation	C 207	23.5%
Be more welcoming	D 191	21.7%
Get more involved in community	E 190	21.6%
*Other	F 44	5.0%

\*Other - see attached list



26. Which **one** of the following is your idea of stewardship?

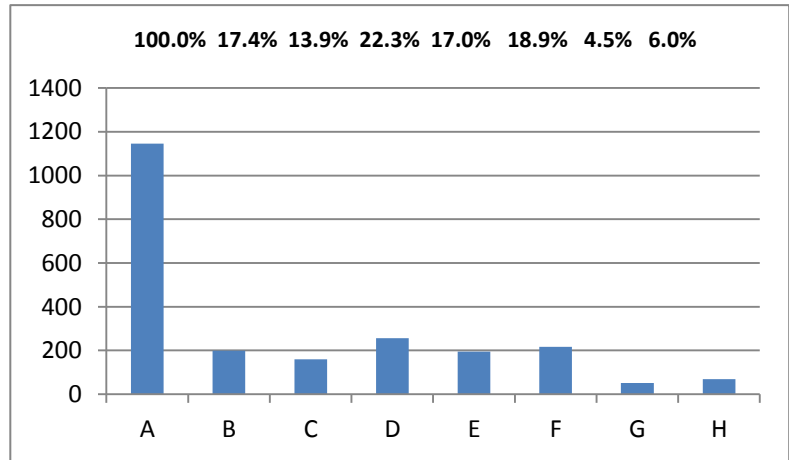
Responses	# of Responses	%
Total	A 562	100.0%
Show gratitude to God for blessings	B 304	54.1%
Share my time and talents	C 156	27.8%
Donate money volunteer time/talent	D 102	18.1%



27. What would invite your involvement in the parish?

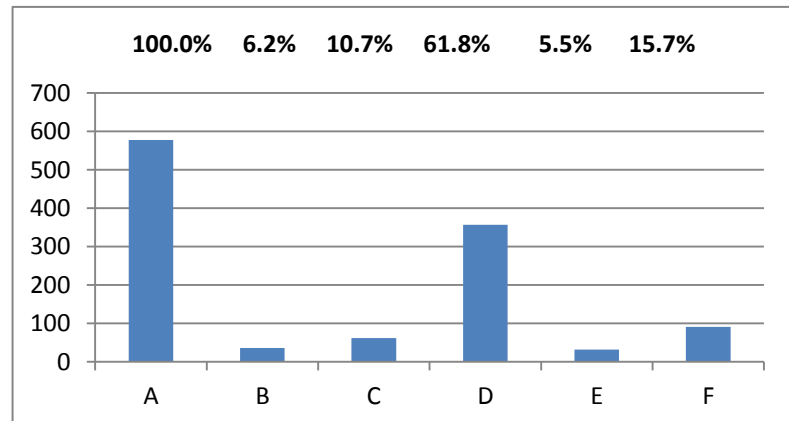
Responses	# of Responses	%
Total	A 1146	100.0%
Good liturgy	B 199	17.4%
Ways to be of service	C 159	13.9%
Feeling of being "at home"	D 256	22.3%
Opportunities to grow my faith	E 195	17.0%
Social opportunities/fellowship	F 217	18.9%
Personal invitation	G 51	4.5%
*Other	H 69	6.0%

\*Other - see attached list



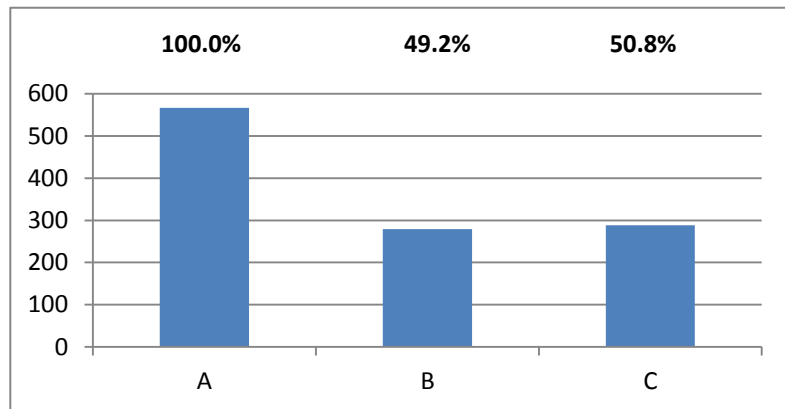
28. What is your perception of our parish's current financial position?

Responses	# of Responses	%
Total	A 578	100.0%
Pay bills and save money	B 36	6.2%
Pay operating bills	C 62	10.7%
Have to make priority decisions	D 357	61.8%
Not enough revenue to pay bills	E 32	5.5%
Have no idea	F 91	15.7%



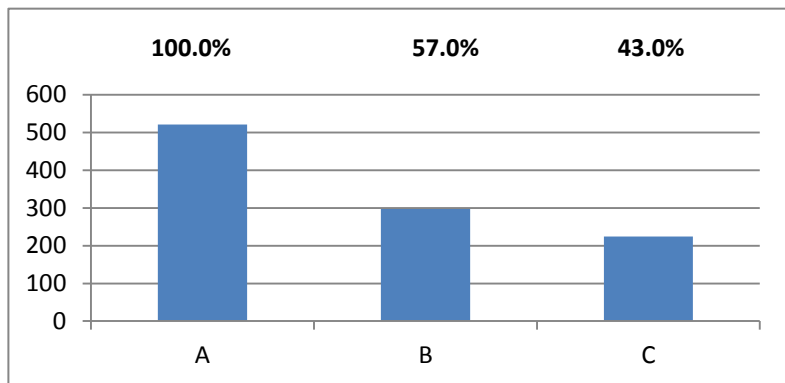
29. Would you be willing to help with major facility renovation costs which are beyond our yearly budget?

<u>Responses</u>	# of Responses	%
Total	567	100.0%
Yes	279	49.2%
No	288	50.8%



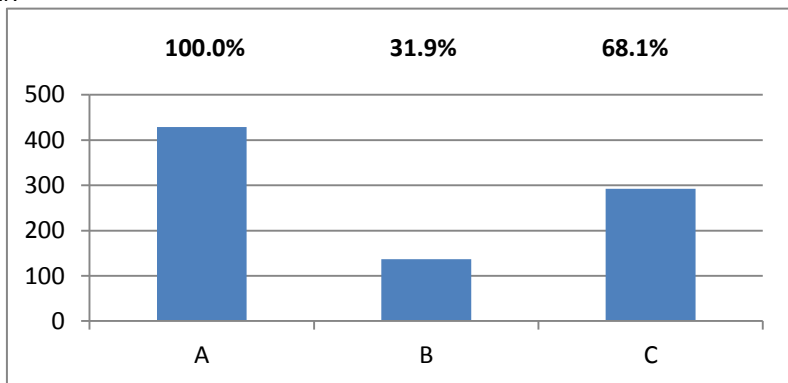
30. Are you aware the parish has debt in excess of \$200,000?

<u>Responses</u>	# of Responses	%
Total	521	100.0%
Yes	297	57.0%
No	224	43.0%



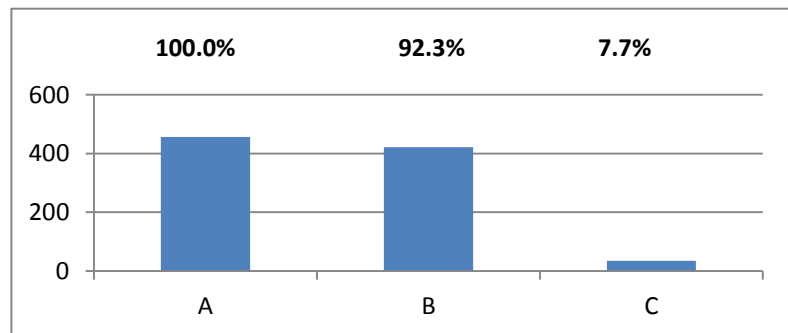
31. Have you considered including St. Gerald Church in you will?

<u>Responses</u>	# of Responses	%
Total	429	100.0%
Yes	137	31.9%
No	292	68.1%



32. Would you recommend our parish to a friend?

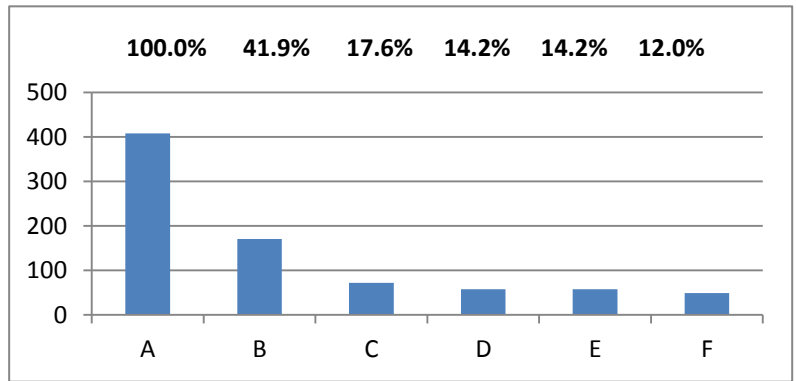
<u>Responses</u>	# of Responses	%
Total	457	100.0%
Yes	422	92.3%
No	35	7.7%



33. The things I like best about St. Gerald Church are:

Responses		# of Responses	%
Total	A	408	100.0%
The people/fellowship/comunty	B	171	41.9%
Choir /good music	C	72	17.6%
A welcoming parish	D	58	14.2%
The building/location	E	58	14.2%
Feeling of family/home	F	49	12.0%

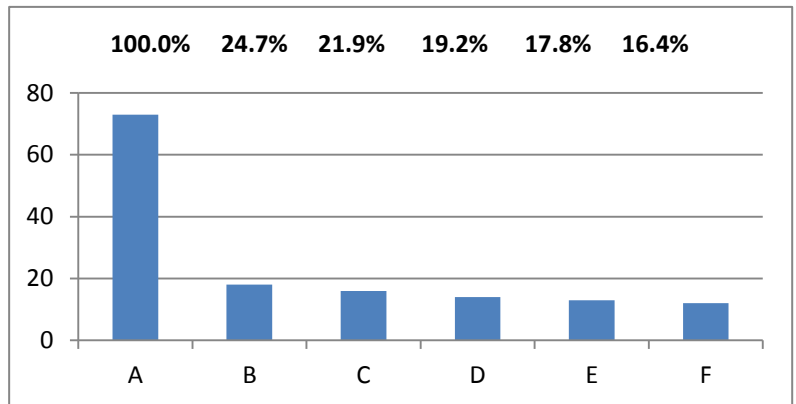
See "Other" for additional responses



34. I wish St. Gerald Church would:

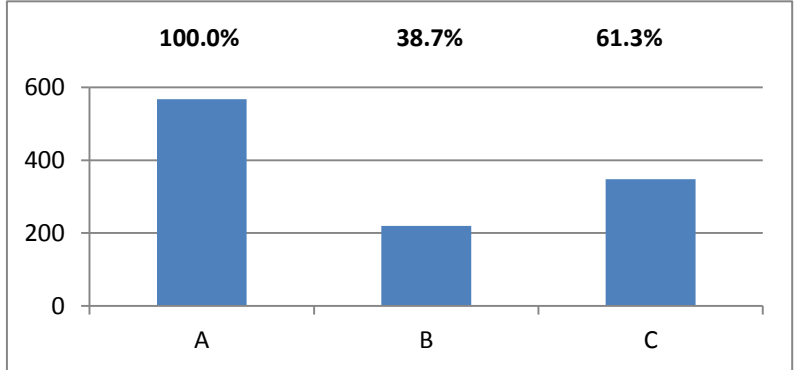
Responses		# of Responses	%
Total	A	73	100.0%
Get more parishioners involved	B	18	24.7%
Daily or Saturday 5:30 eve mass	C	16	21.9%
Keep mass to 1 hour	D	14	19.2%
Welcome new people/ideas	E	13	17.8%
Follow up on stewardship forms	F	12	16.4%

See "Other" for additional responses



35. Sex:

Responses		# of Responses	%
Total	A	568	100.0%
Male	B	220	38.7%
Female	C	348	61.3%



36. Age:

Responses		# of Responses	%
Total	A	564	100.0%
19 - 29	B	24	4.3%
30 - 39	C	55	9.8%
40 - 49	D	99	17.6%
50 - 59	E	111	19.7%
60 - 69	F	154	27.3%
70 - 79	G	99	17.6%
80 or older	H	22	3.9%

